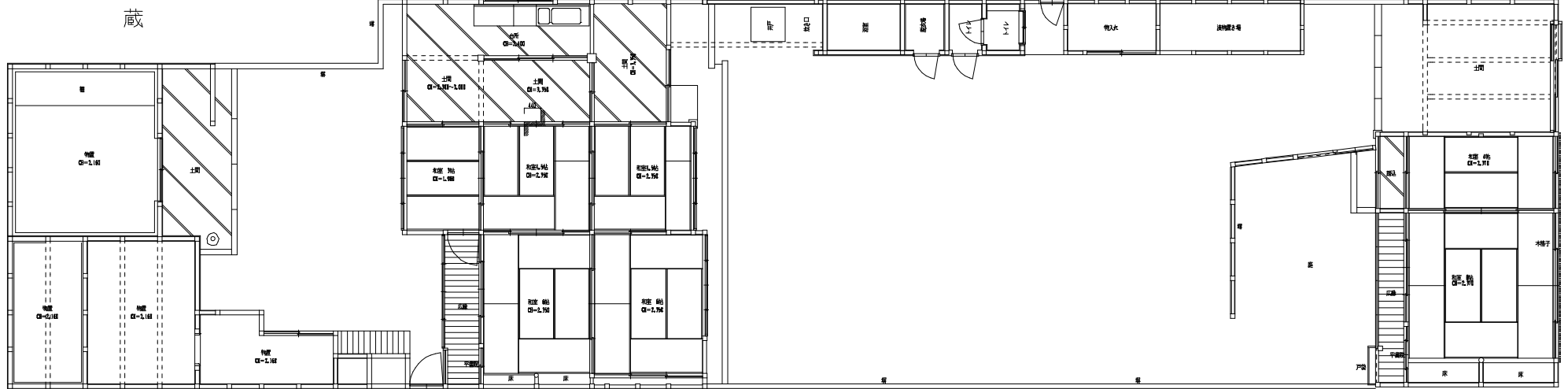


1階 A = 22.61㎡

母屋

門屋



門屋 1階 A = 47.66㎡

蔵 1階 A = 52.35
 2階 A = 19.25
 A = 71.60㎡

母屋 1階 A = 71.34
 2階 A = 50.39
 A = 122.39㎡

TOTAL 1階 194.96
 2階 69.64
 計 264.64㎡